



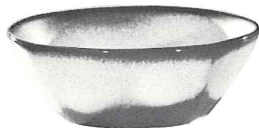
\*5V-2 QT. BAKER-4.00



\*5W-3 QT. BAKER-5.00



\*5N-4 1/2 QT. BOWL-6.00



5XL-20 OZ. BOWL-1.40

5X-14 OZ. CEREAL-1.25

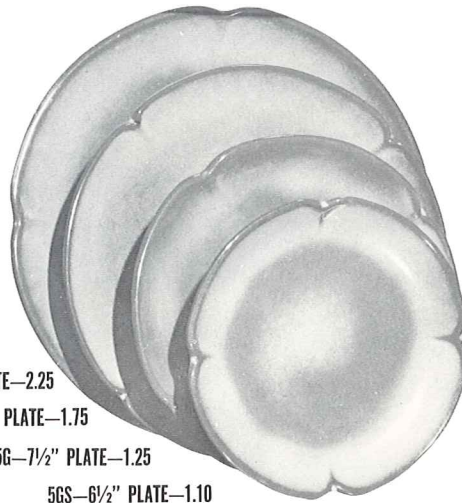
5XS-9 OZ. FRUIT-.90



\*5ND-9" CHEESE DIP-3.00



5S-20 OZ. GRAVY BOAT-2.00



5F-10" PLATE-2.25

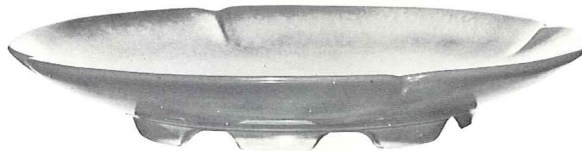
5FS-9" PLATE-1.75

5G-7 1/2" PLATE-1.25

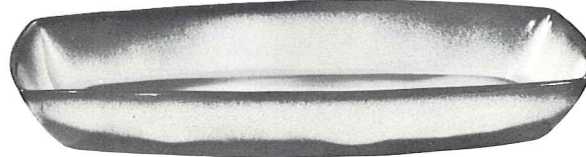
5GS-6 1/2" PLATE-1.10



\*5NS-9" VEGETABLE-2.50

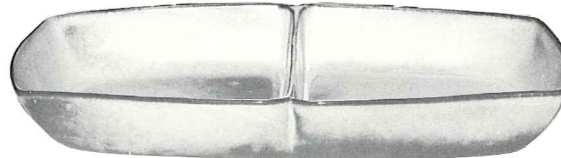


5FC-15" CHOP PLATE-10.00

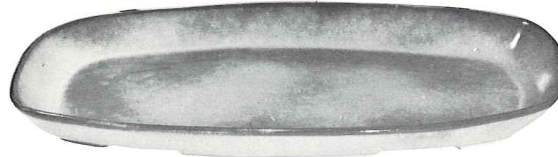


5P-17" PLATTER-7.00

5Q-13" PLATTER-3.50



5QD-13" DIVIDED BOWL-3.50



\*5QS-13" PLATTER-2.25

\*5PS-9" TRAY-1.50



\*5T-6 CUP TEAPOT-3.50



5M-16 OZ. MUG-1.50



\*5DC-DEMITASSE CUP-.90

\*5DE-DEMITASSE SAUCER-.90



\*5CL-12 OZ. MUG-1.25



\*5A-12 OZ. CREAMER-1.25

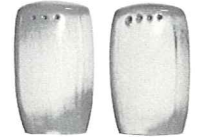


\*5B-SUGAR WITH LID-1.75



5C-CUP-1.00

5E-5 1/2" SAUCER-.90



\*5HS-SALT & PEPPER-1.50



\*5L-12 OZ. TUMBLER-1.10



\*5LC-6 OZ. JUICE-.90



\*5DB-6 OZ. SUGAR-.90



\*5DA-6 OZ. CREAMER-.90



5TL-12 CUP TEAPOT-4.50



5D-3 QT. PITCHER-4.00

THIS PAGE AVAILABLE IN BROWN SATIN, DESERT GOLD, PRAIRIE GREEN & WOODLAND MOSS, EXCEPT WHERE NOTED\*.

\* AVAILABLE IN ALL COLORS-ADD 50% FOR FLAME

SIZES ARE APPROXIMATE AND MAY VARY SLIGHTLY